

REVISIONS



NORWALK LA MIRADA UNIFIED SCHOOL DISTRICT
LA MIRADA HIGH SCHOOL NEW FOOTBALL STADIUM PROJECT
13520 ADELA DRIVE, LA MIRADA, CA 90638

DSA # 03-120551

NAC
ARCHITECTURE

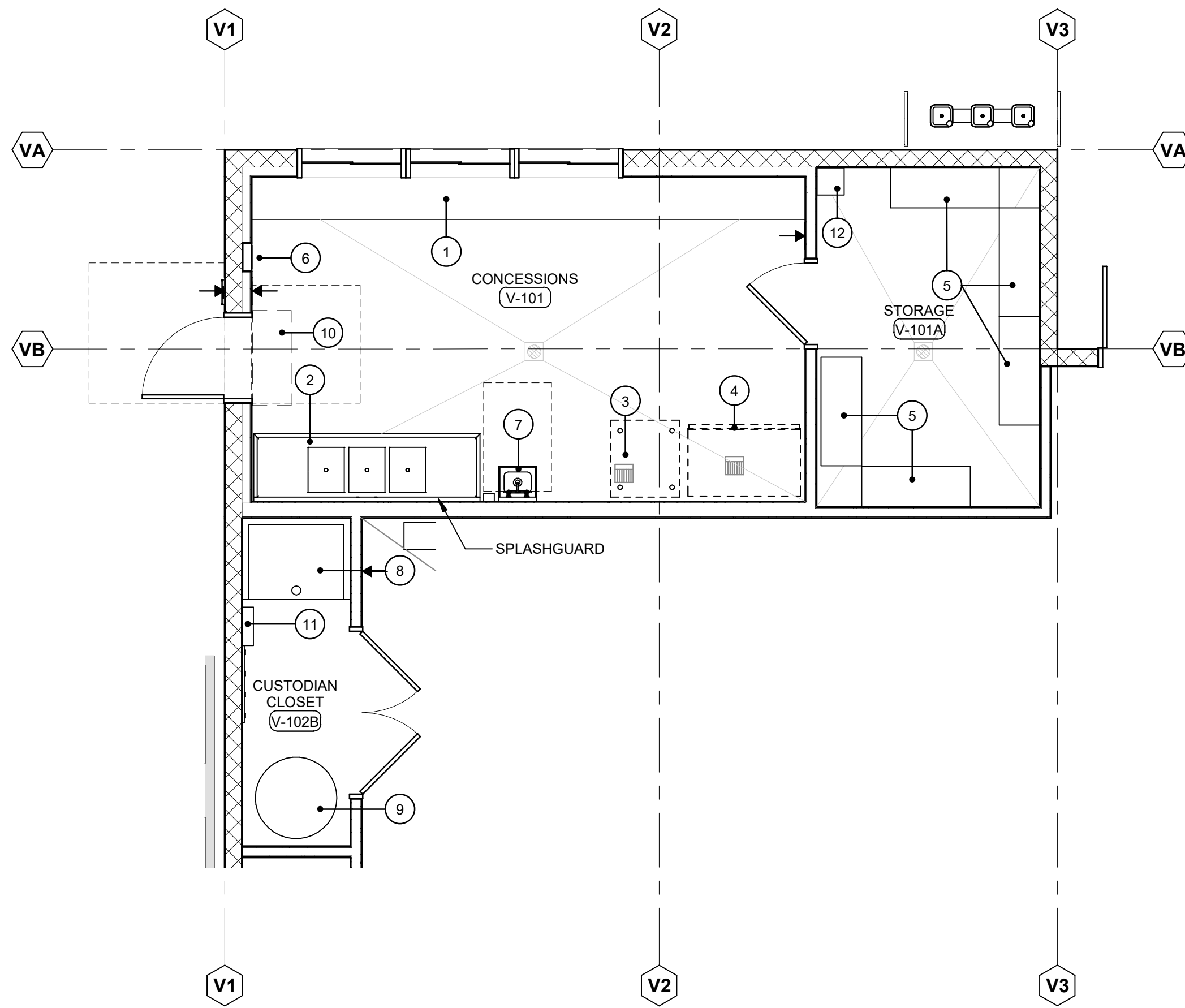
NAC NO: 161-19015
DATE: 12/10/2020

DSA BACKCHECK
SUBMISSION

DOOR & WINDOW
SCHEDULES

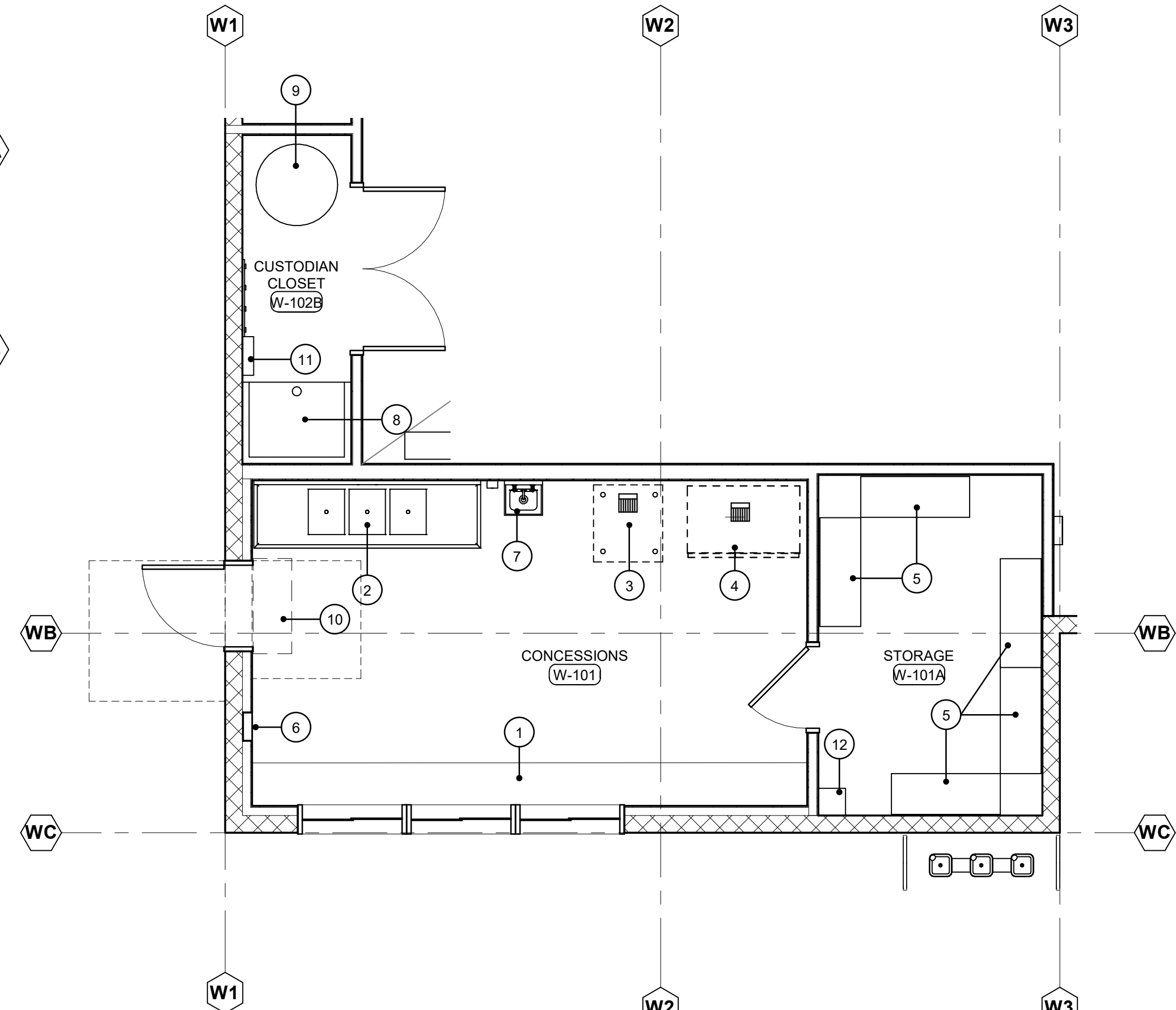
A3.20

© 2020 NAC INC.



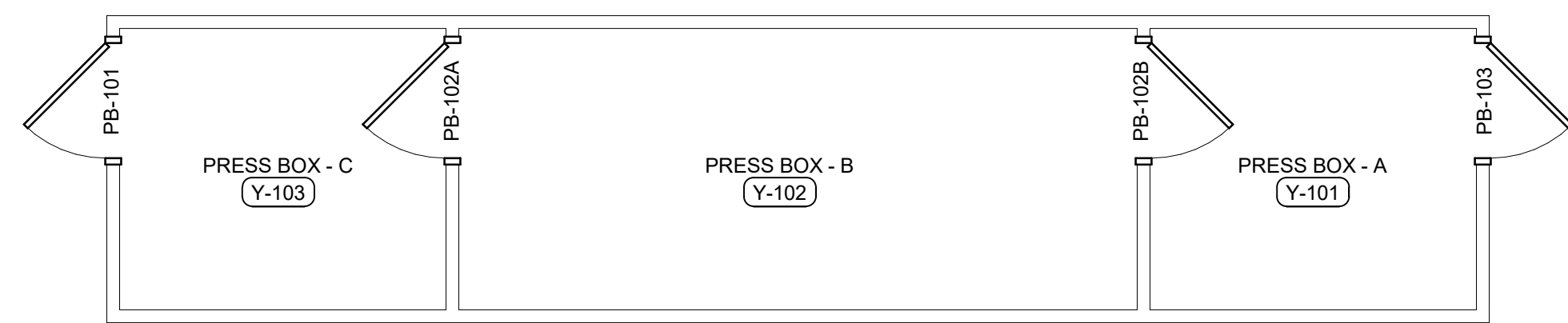
3 BUILDING V - HOME CONCESSIONS

Scale: 1/4" = 1'-0"



2 BUILDING W - VISITOR CONCESSIONS

Scale: 1/4" = 1'-0"



1 BUILDING Y - PRESS BOX

Scale: 1/4" = 1'-0"

LOUVER SCHEDULE						
LOUVER	WIDTH	HEIGHT	FRAME			NOTE
			FINISH	MATERIAL	TYPE	
UA	3'-4"	1'-0"	FACTORY	ALUM	A	
VA	3'-4"	2'-0"	FACTORY	ALUM	B	

RELITE SCHEDULE											
RELITE NO.	WIDTH	HEIGHT	FRAME			DETAILS				LABEL	REMARKS / CODED NOTES
			TYPE	MATERIAL	FINISH	HEAD	JAMB	JAMB	SILL		

BUILDING U - TICKET BOOTH											
U1	4'-4"	3	ALUM	FACTORY		2/A5.03	3/A5.03	3/A5.03	2/A5.03		#6
BUILDING V - HOME FIELD HOUSE											
V1	4'-0"	2	STL	PT		1/A5.04	4/A5.04	4/A5.04	3/A5.04		#6
V2	4'-0"	4	ALUM	FACTORY		8/A9.01	8/A9.01	8/A9.01	8/A9.01		
V3	3'-6"	5	ALUM	FACTORY		8/A9.01	8/A9.01	8/A9.01	8/A9.01		

BUILDING W - VISITOR FIELD HOUSE											
W1	4'-0"	2	STL	PT		1/A5.04	4/A5.04	4/A5.04	3/A5.04		
W2	4'-0"	4	ALUM	FACTORY		8/A9.01	8/A9.01	8/A9.01	8/A9.01		
W4	2'-0"	5	ALUM	FACTORY		8/A9.01	8/A9.01	8/A9.01	8/A9.01		

EQUIPMENT SCHEDULE				
KEYNOTE	EQUIPMENT	DRAIN	MANUFACTURER	COMMENTS
1	STAINLESS STEEL COUNTERTOP, TYP	-	-	-
2	3 COMPARTMENT SINK WITH 6" SPLASHGUARD	DIRECT	ELKAY - #14-3C16X20-2-24X	HOT & COLD WATER, SEE NOTE #1
3	ICE MACHINE	FLOOR SINK	SCOTSMAN MODEL #B330P	-
4	REFRIGERATOR	FLOOR SINK	TURBO AIR MODEL #M3RF45-R-N	-
5	FULL HEIGHT METAL SHELVES	-	METRO	12 X 48 WITH 6" HIGH LEGS, SEE NOTE #2
6	WALL MOUNTED FIRE EXTINGUISHER CABINET	-	-	-
7	ACCESSIBLE HANDWASH SINK	DIRECT	ELKAY - ELV2219SACC	HOT & COLD WATER
8	MOP SINK	DIRECT	AMERICAN STANDARD #7745.811	HOT & COLD WATER
9	WATER HEATER	-	A.O. SMITH EJCS-20	ELECTRIC 17 GAL.
10	DOOR ACTIVATED AIR CURTAIN	-	MARS	2471 CFM
11	WALL MOUNTED MOP RACK & CHEMICAL SHELF	-	BOBRICK MODEL #B-239	-
12	EMPLOYEE LOCKER	-	-	-

DOOR SCHEDULE																		
DOOR NO	PR	DOOR LEAF A	DOOR LEAF B	DOOR HT	DOOR			FRAME			DETAILS				HARDWARE GROUP	LABEL	REMARKS / CODED NOTES	DOOR NO
					TYPE	MATERIAL	FINISH	TYPE	MATERIAL	FINISH	HEAD	HINGE JAMB	STRIKE JAMB	SILL				
G26		4'-0"		6'-0"	C	CHAINLINK									B1		SEE DETAIL 11/A5.03	G26

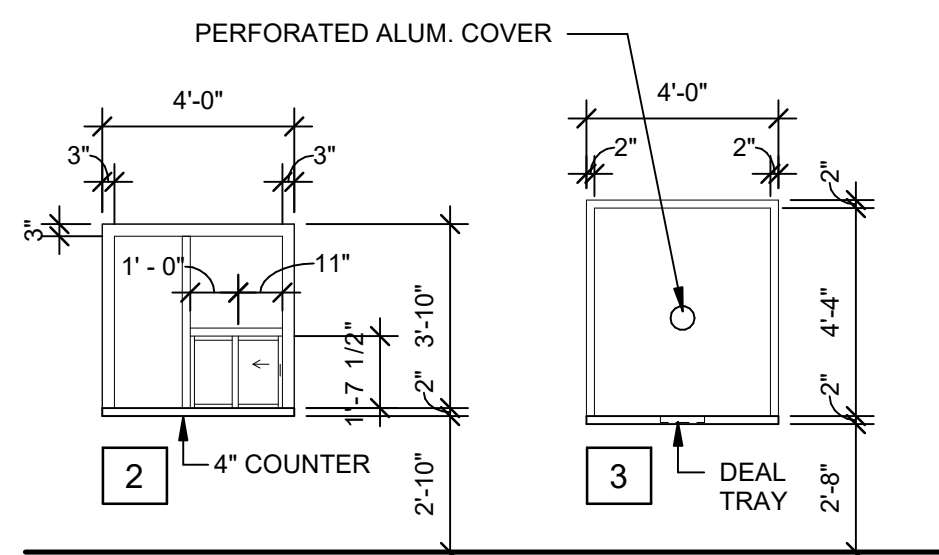
BUILDING U - TICKET BOOTH																		
U-101		3'-0"	0"	7'-2"	A	HM	PT	F-1	STL	PT	4/A5.04	3/A5.03	3/A5.03	5/A5.03	1		#3 LOUVER	U-101

BUILDING V - FIELD HOUSE																		
V-101		3'-0"	0"	7'-2"	A	HM	PT	F-1	STL	PT	2/A5.03	1/A5.03	1/A5.03	5/A5.03	1A		#3,4	V-101
V-101A		3'-0"	0"	7'-2"	A	HM	PT	F-1	STL	PT	12/A5.03	9/A5.03	9/A5.03	6/A5.03	4A		#4	V-101A
V-102	PR	3'-0"	3'-0"	7'-2"	B	HM	PT	F-2	STL	PT	4/A5.03	3/A5.03	3/A5.03	5/A5.03	5		#3,4,5	V-102
V-102A	PR	3'-0"	3'-0"	7'-2"	B	HM	PT	F-2	STL	PT	12/A5.03	9/A5.03	9/A5.03	6/A5.03	6			V-102A
V-102B	PR	3'-0"	3'-0"	7'-2"	B	HM	PT	F-2	STL	PT	12/A5.03	9/A5.03	9/A5.03	6/A5.03	6			V-102B
V-103		3'-0"	0"	7'-2"	A	HM	PT	F-1	STL	PT	2/A5.03	1/A5.03	1/A5.03	5/A5.03	2		#3	V-103
V-104		3'-0"	0"	7'-2"	A	HM	PT	F-1	STL	PT	2/A5.03	1/A5.03	1/A5.03	5/A5.03	2		#3	V-104
V-105		3'-0"	0"	7'-2"	A	HM	PT	F-1	STL	PT	4/A5.03	3/A5.03	3/A5.03	5/A5.03	4B			V-105

BUILDING W - FIELD HOUSE																		
W-101		3'-0"	0"	7'-2"	A	HM	PT	F-1	STL	PT	2/A5.03	1/A5.03	1/A5.03	5/A5.03	1A		#3,4	W-101
W-101A		3'-0"	0"	7'-2"	A	HM	PT	F-1	STL	PT	12/A5.03	9/A5.03	9/A5.03	6/A5.03	4A		#4	W-101A
W-102	PR	3'-0"	3'-0"	7'-2"	B	HM	PT	F-2	STL	PT	4/A5.03	3/A5.03	3/A5.03	5/A5.03	5		#3,4,5	W-102
W-102A	PR	3'-0"	3'-0"	7'-2"	B	HM	PT	F-2	STL	PT	12/A5.03	9/A5.03	9/A5.03	6/A5.03	6			W-102A
W-102B	PR	3'-0"	3'-0"	7'-2"	B	HM	PT	F-2	STL	PT	12/A5.03	9/A5.03	9/A5.03	6/A5.03	6			W-102B
W-103		3'-0"	0"	7'-2"	A	HM	PT	F-1	STL	PT	2/A5.03	1/A5.03	1/A5.03	5/A5.03	2		#3	W-103
W-104		3'-0"	0"	7'-2"	A	HM	PT	F-1	STL	PT	2/A5.03	1/A5.03	1/A5.03	5/A5.03	2		#3	W-104

BUILDING X - ELECTRICAL ROOM																		
X-101		3'-0"	0"	7'-2"	A	HM	PT	F-1	STL	PT	4/A5.03	3/A5.03	3/A5.03	5/A5.03	3			X-101

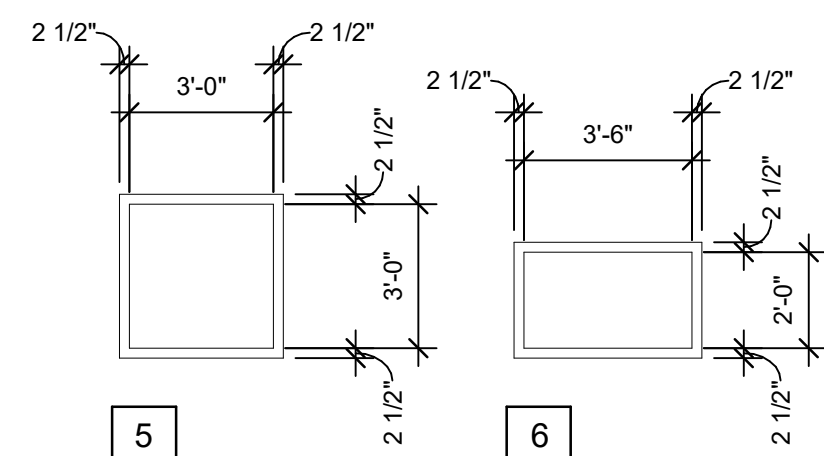
BUILDING Y - PRESS BOX																		
PB-101		3'-0"	0"	7'-0"	A	HM	PT	F-1		STL	PT	-	-	-	-	1	#7	PB-101
PB-102A		3'-0"	0"	7'-0"	A	WD	STN	F-1		STL	PT	-	-	-	-	4	#7	PB-102A
PB-102B		3'-0"	0"	6'-8"	A	WD	STN	F-1		STL	PT	-	-	-	-	4	#7	PB-102B
PB-103		3'-0"	0"	7'-0"	A	HM	PT	F-1		STL	PT	-	-	-	-	1	#7	PB-103



NOTE: SLIDING DOOR TO CONTAIN SELF CLOSER DEVICE. MAX. OPENING SIZE IS 216 SQ. IN.

WINDOW TYPES

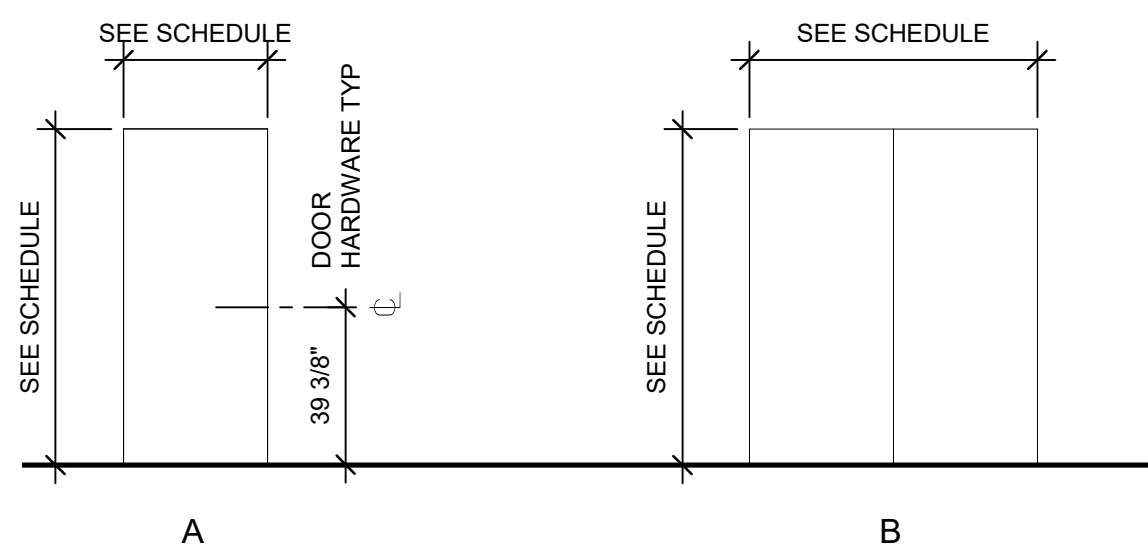
Scale: 1/4" = 1'-0"



SKYLIGHTS: ICC-ES REPORT ESR-3837

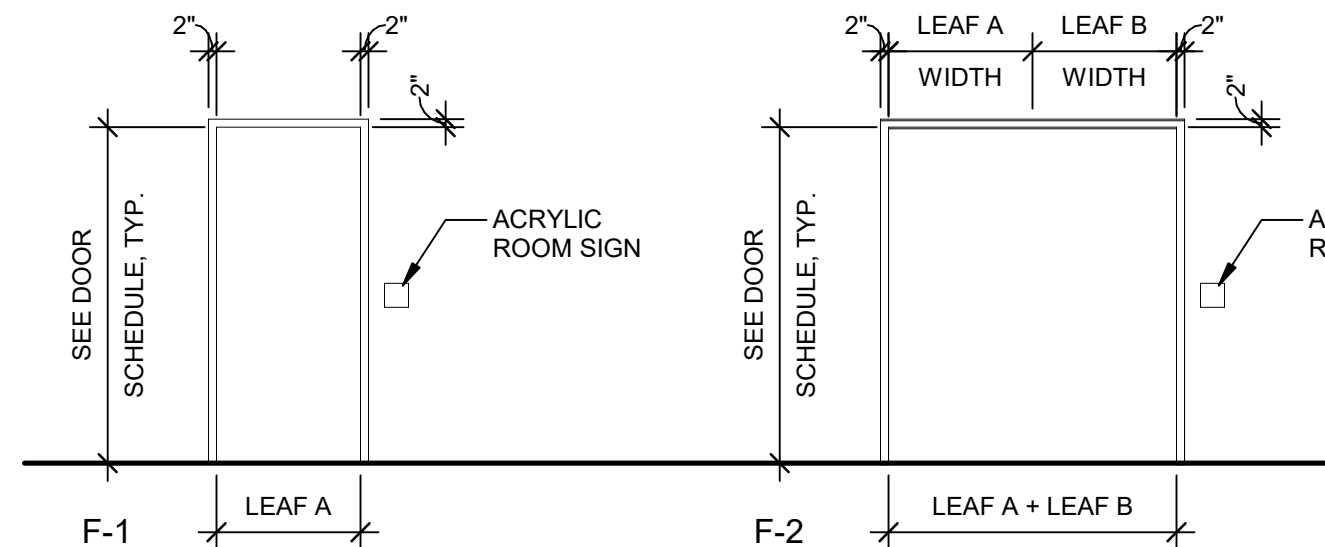
SKYLIGHT TYPES

Scale: 1/4" = 1'-0"



DOOR TYPES

Scale: 1/4" = 1'-0"



FRAME TYPES - DOOR

Scale: 1/4" = 1'-0"